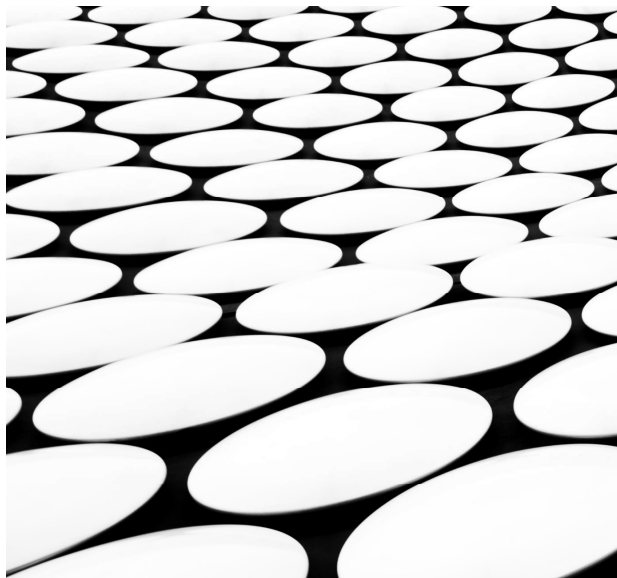
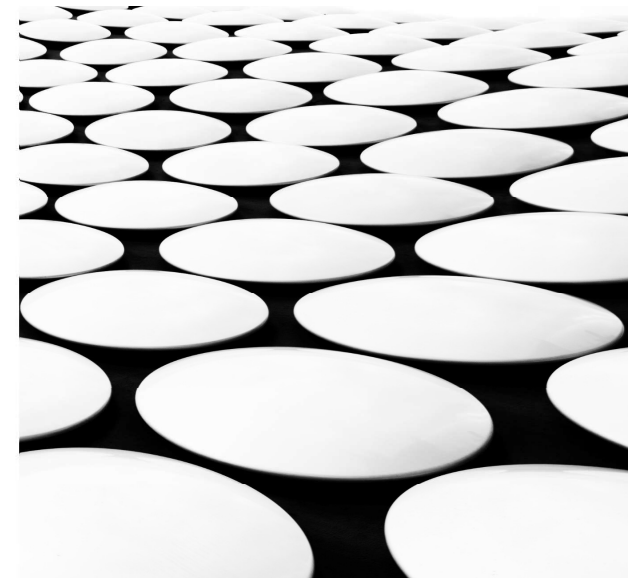


---

# IMPORTANT TERMINOLOGIES IN BIM



**BEP**      **TIDP**  
**AIR**      **BIM**  
**MIDP**      **CDE**  
**EIR**      **COBie**  
**OIR**





- Active Participation
- ON your video camera
- Gadgets on DND mode
- Put water bottles – keep yourself hydrated



- No spamming
- Keep yourself on mute
- Ask relevant Questions in Q&A session
- No other works

---

# CONTENTS

- AIR, AIM
- BEP/BXP, CONSTRUCTION MODEL
- CLASH DETECTION
- COMMON DATA ENVIRONMENT
- COBie, EDMS
- EIR, IFC
- LOD
- PIM, PBP
- MIDP
- TIDP



---

## **AIR – ASSET INFORMATION REQUIREMENT**

Data and information requirements of the organization in relation to the asset(s) it is responsible for.

## **AIM – ASSET INFORMATION MODEL**

AIM provides all the **data** and information related to, or required for the operation of an asset.

---

## **BEP/BXP – BIM EXECUTION PLAN**

Building Information Modelling Execution plan Is a plan prepared by the Suppliers/GC to explain how the information modeling aspects of a project will be carried out (as defined by PAS 1192-2:2013).

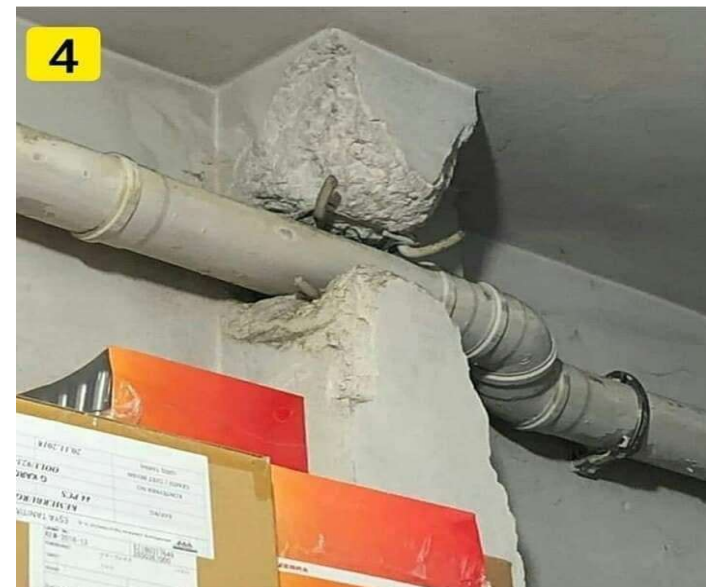
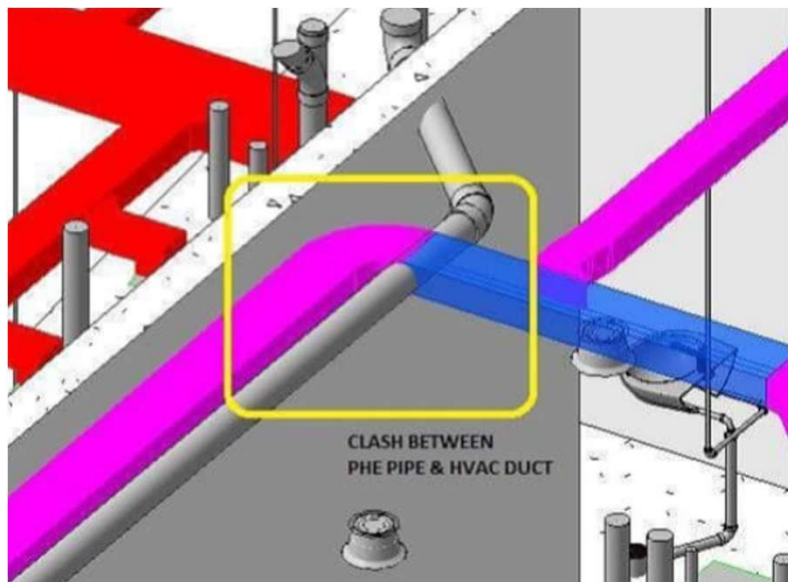
## **CONSTRUCTION MODEL**

The model(s) based on criteria that relates the facility's construction.

---

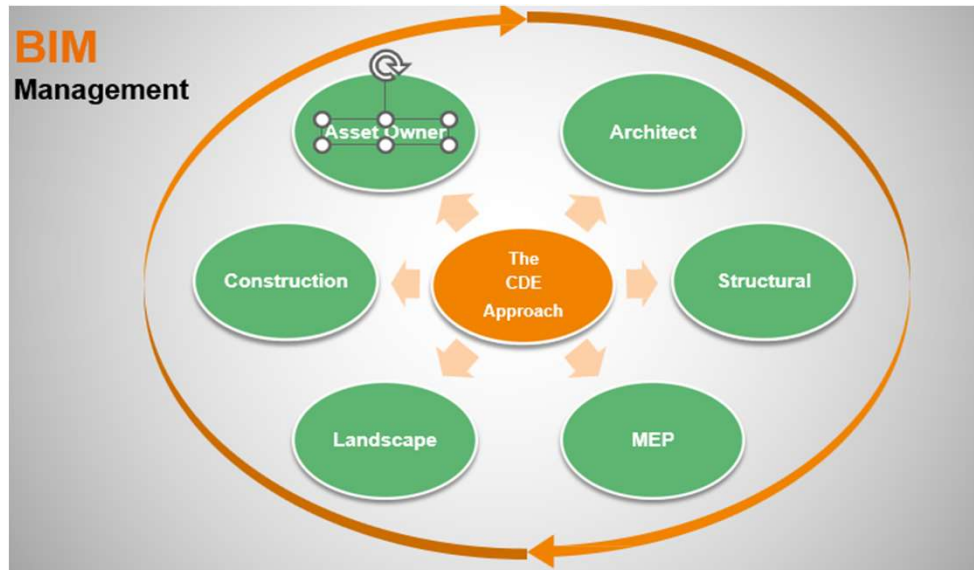
## CLASH DETECTION

Is detecting possible collisions between elements in a building information model which would not otherwise be desired or buildable on site.



## CDE – COMMON DATA ENVIRONMENT

Is a single source of information for any given project, used to collect, manage and disseminate all relevant approved project documents for multi-disciplinary teams in a managed process (as defined by PAS 1192-2:2013).



---

## **COBIE – CONSTRUCTION OPERATION BUILDING INFORMATION EXCHANGE**

COBie is structured asset information for the commissioning, operation and maintenance of an asset often in a neutral spreadsheet format that will be used to supply data to the organization to populate decision-making tools and asset management systems (as defined by PAS 1192-3:2014).

## **EDMS – ELECTRONIC DOCUMENT MANAGEMENT SYSTEM**

Is a system for storing, retrieving, sharing and otherwise managing electronic documents.



---

## **EIR – EMPLOYER’S INFORMATION REQUIREMENT**

EIR is a pre-tender document setting out the information to be delivered, and the standards and processes to be adopted by the supplier as part of the project delivery process.

## **IFC – INDUSTRY FOUNDATION CLASSES**

IFC is a neutral and open specification, object-based file format with a data model developed by building SMART to facilitate interoperability in the architecture, engineering and construction (AEC) industry.





# LOD – LEVEL OF DEVELOPMENT

Describes the level of completeness to which a Model Element is developed.

<b>Conceptual Design</b>	<b>Design Development</b>	<b>Construction Documentation</b>
		
<b>LOD 100 BIM</b>	<b>LOD 200 BIM</b>	<b>LOD 200/ 300 BIM</b>
<b>Presentation, Bidding</b>	<b>Construction</b>	<b>As-Built Modeling</b>
		
<b>LOD 300 BIM</b>	<b>LOD 400 BIM</b>	<b>LOD 500 BIM</b>

---

## **PIM – PROJECT INFORMATION MODEL**

Is the information model developed during the design and construction phase of a project, consisting of documentation, non-graphical information and graphical information defining the delivered project.

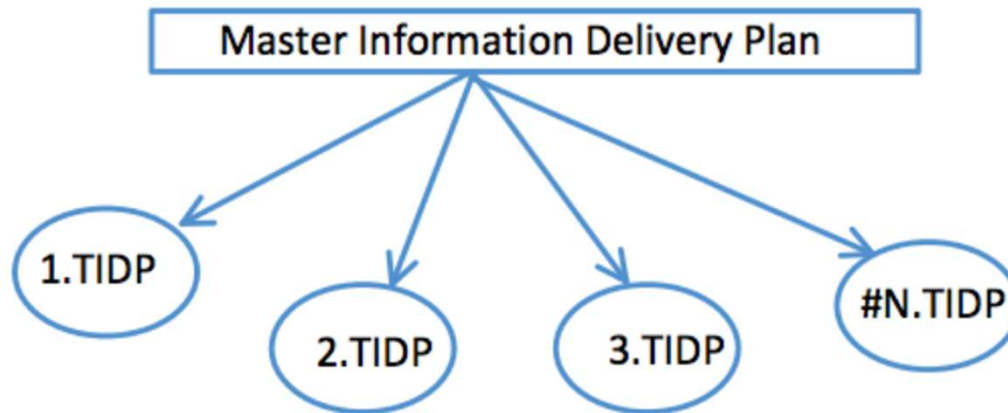
## **PBP – PROJECT BIM PROTOCOL**

Is the Project Specific BIM Protocol setting out the obligations of the principal members of the Project Team in respect of the use of BIM on the Project.

---

## MIDP – MASTER INFORMATION DELIVERY PLAN

Is the primary plan for when project information is to be prepared, by whom and using what protocols and procedures, incorporating all relevant task information delivery plans.



---

## **TIDP – TASK INFORMATION DELIVERY PLAN**

The Task Information Delivery Plan (TIDP) is defined by the British Standards Institution as federated lists of information deliverables by each task, including format, date and responsibilities.

Thank you



REACH ME THROUGH



[PARVEZJAFAR03@GMAIL.COM](mailto:PARVEZJAFAR03@GMAIL.COM)



[@IMPk111](https://twitter.com/IMPk111)



[@PARV7860](https://www.instagram.com/parv7860)



[HTTPS://WWW.FACEBOOK.COM/PROFILE.PHP?ID=100001806983116WWW.LI](https://www.facebook.com/profile.php?id=100001806983116)



[NKEDIN.COM/IN/PARVEZ-KHAN-B136B673](https://www.linkedin.com/in/parvez-khan-b136b673)